

National free service hotline
0086-02981506887

**QSS-
Basic**



FUJISJ
FUJI ELEVATOR CO.,LTD

CATALOGUES

*Stand on the ground, FUJI elevator
— Quiet, Smooth, Safe!*

FUJISJ Elevator

- Add: F18, xinyuan center, No. 287, fenghe road,
lianhu district, xi'an city, Shaanxi province, China
- Tel: 008602981506887
- WhatsApp: 86-17392707011
- Email: sales.support@elevator-fuji.com
- Http: www.fujisj.com

The printed products are for reference only. the company has the right change the designs and specifications of the products at any time.
the information contained in the printed products dose not constitute any express or implied guarantees or commitmente for the products and its
applicability, merchantability, and quality of special purposes, or any time of procurement agreement.

Printing in January 2023

Q U I E T S M O O T H S A F E

Company profile

Fuji Elevator is a Sino-Japanese joint venture urban vertical transportation supplier, applying the foreign advanced technology concept, combined with Chinese strong manufacturing capacity, to present the industry-leading "senseless operation elevator" to the world. The company currently has two production bases in China, 150,000 square meters and 260,000 square meters, and is the only R&D and manufacturing base invested by Fuji Electric in China. The supporting factory has excellent production equipment, perfect product service system, more than 2,000 employees and a technical team of nearly 100 people, with an annual production capacity of 20,000 elevators and 2,000 escalators. The products of company include passenger elevators, home elevators, medical elevators, freight elevators, sightseeing elevators, escalators, moving walkways, and can be customized according to customer needs. The products manufactured by FUJI Elevator have been sold and installed in dozens of countries such as Saudi Arabia, UAE, Mexico, Philippines, Indonesia, Nigeria, etc.



Basic

QSS-Basic

Q — Quiet
S — Smooth
S — Safe

Fuji Elevator is a Sino-Japanese joint venture, providing lift production and manufacturing to the world. It holds the exclusive patent for the "Senseless Operation" technology for lifts developed in collaboration with Fuji Electro-Mechanical Corporation of Japan. The QSS-Basic series as the company basic product, inherits the sensorless operation technology and is characterised by its quiet, comfortable and safe operation. Quiet, Smooth, Safe is the culmination of the technology and an important basis for enhancing the elevator experience. QSS-Basic, is the starting point for a happy journey.



FUJISJ - the founder of feltless elevator



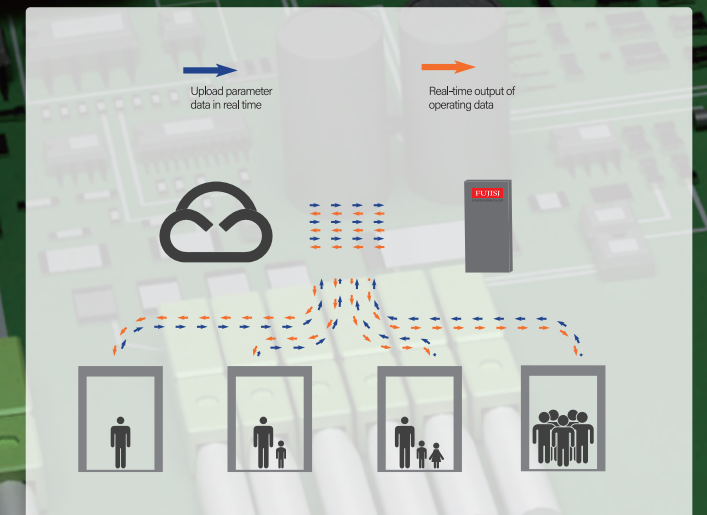
The world's first elevator company that integrates [program design, perception technology + AI intelligence] into the elevator field, and combines mechanical structure design to achieve a stable, comfortable and safe—feltless elevator.

About programming

FUJISJ feltless elevator is the world first to change the program design from traditional input type to adaptive data dictionary. The "big and small steps" in the previous speed control curve are finely ground into an extremely smooth "ice surface" that has no feeling of acceleration and deceleration.

The fusion of the perception technology and AI intelligence

FUJISJ feltless elevator adopts the fusion application of advanced real-time accurate load sensing technology and AI intelligent algorithm to realize the stepless weighing torque compensation and automatic adjustment of starting parameters, and truly made it start

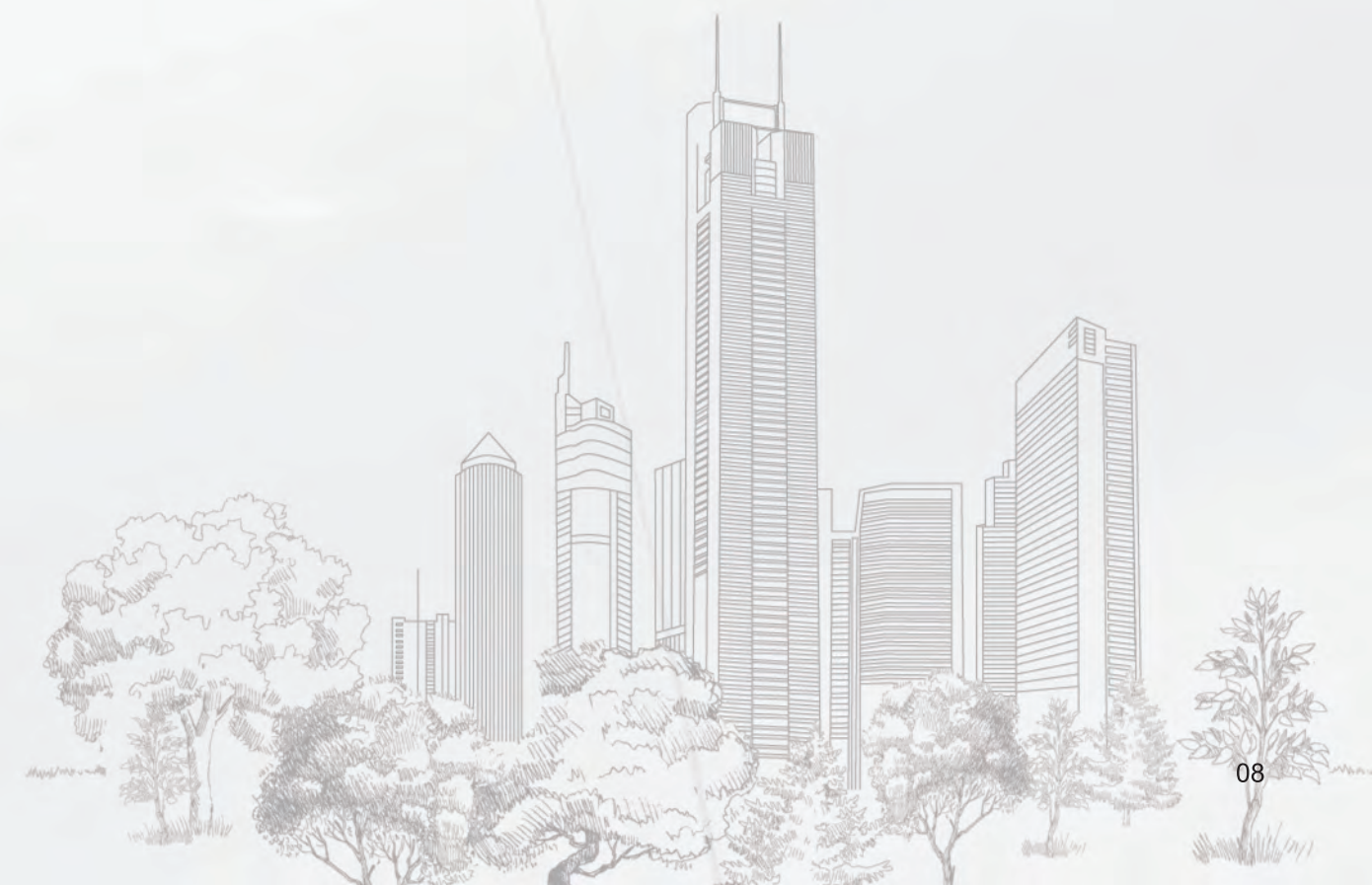


Mechanical structure design

FUJISJ feltless elevator has undergone tens of thousands of combined gravity compression + buffering experimental parameter tests, and obtained the optimal elastic coefficient fusion damping scheme required by each damping unit under different ladder structures, different speeds and load conditions, and perfectly The three are tested and matched, which comprehensively solves all the discomfort caused by the mechanical vibration of the elevator, making the running without feeling.

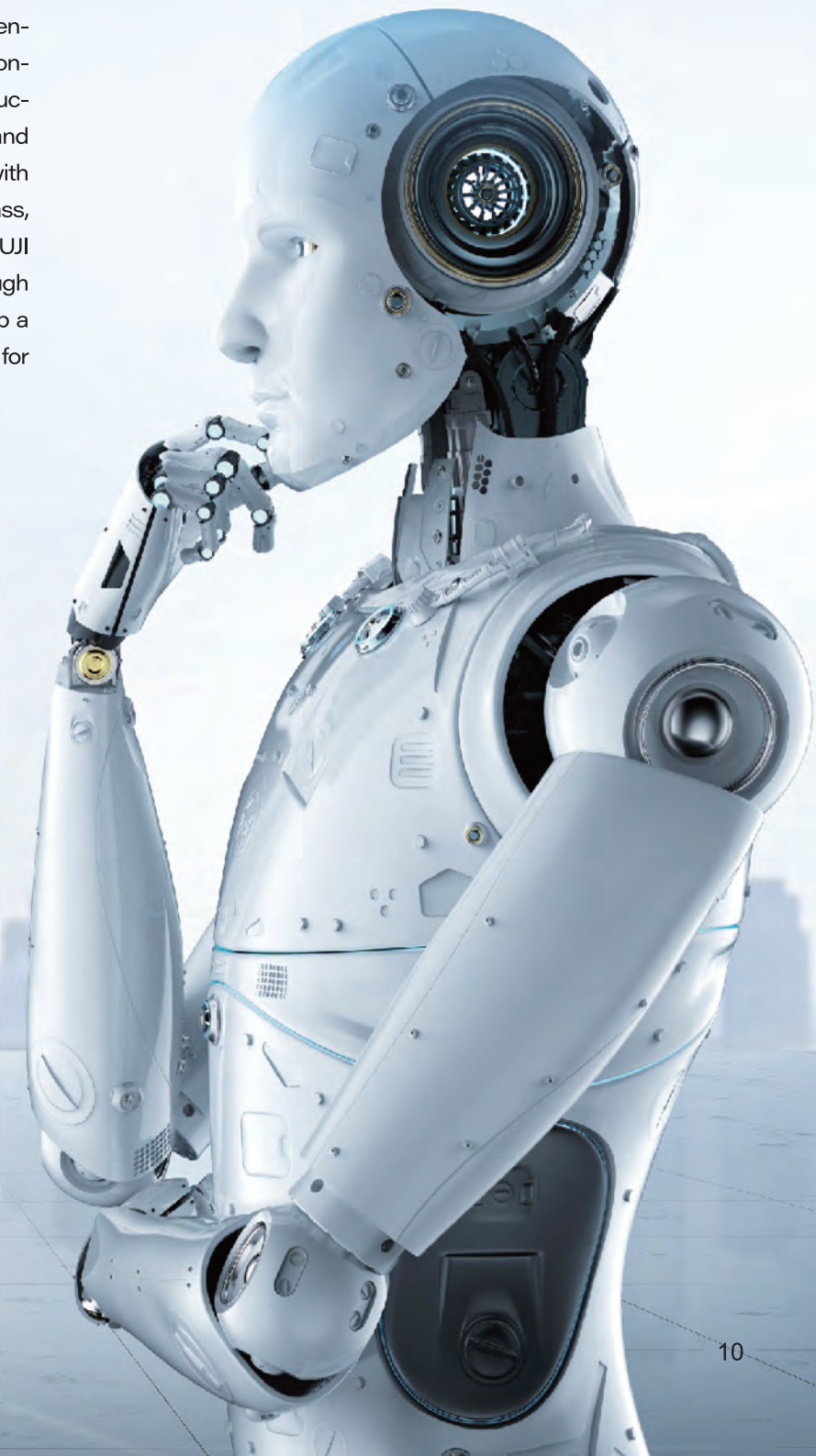
Small machine room passenger elevator

The small machine room passenger elevator adopts an energy-efficient, low-speed, permanent-magnet synchronous gearless traction machine. Compared with a geared elevator with equivalent load level, it saves about 33% of energy. The specially designed small-size control cabinet combines the most advanced low-loss IGBTs and the best design solutions to make the room space perfectly arranged.



Machine roomless passenger elevator

The elevator without machine room passengers is well aware of the concept of environmental protection, saving energy and reducing consumption, saving floor space and improving design freedom. Compared with geared elevators of the same load class, energy savings are more than 33%. FUJI machine-room passenger lift broke through the premise that the elevator must set up a machine room, providing perfect creation for the limited space of modern architecture.





High speed elevator

Adopt super high speed elevator serial control system

The control system adopts a 32-bit networked intelligent serial communication elevator special control system, which greatly improves the CPU operation speed. The four-layer sheet paste technology, CAN bus serial communication, thus ensuring a large amount of data high-speed reliable transmission.

It applies new style shock-absorbing device.

It sets shock-absorbing device to isolate shock between elevator car and car frame. It nicely buffers vibration in the elevator running process. It reduces the elevator car vibration and enhances the passengers' comfortable travel.

Combined car wall connection ensures static car effects, fine sealing and stability of air pressure.





FJ-B-K01

Ceiling: Mirror stainless steel, acrylic soft lighting.
Illumination: Hairline stainless steel, mirror, etched
Handrail: Stainless steel single tube/flat handrail
Floor: Vitrified brick(FJ-F01)



FJ-B-K02



Ceiling: Mirror stainless steel, acrylic soft lighting.
Illumination: Hairline stainless steel, mirror, etched
Handrail: Stainless steel single tube/flat handrail
Floor: Vitrified brick(FJ-F01)



FJ-B-K03





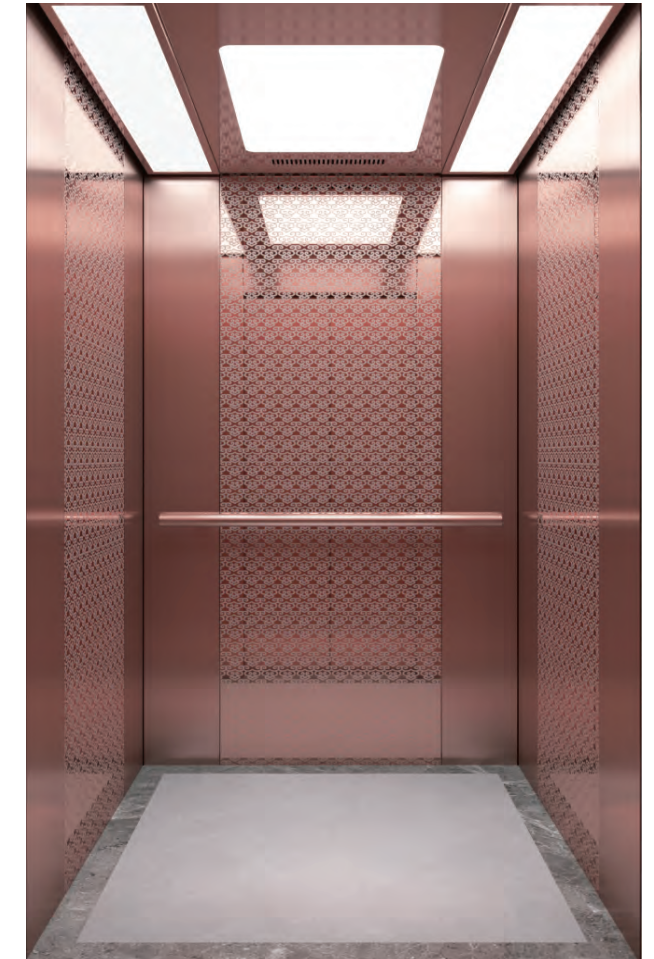
FJ-B-K04



- Ceiling: Titanium mirror stainless steel, acrylic soft lighting.
- Cabin wall: Titanium mirror, hairline stainless
- Side wall: Titanium hairline stainless
- Handrail: Stainless steel flat handrail
- Floor: Vitrified brick(FJ-F01)

FJ-B-K06

- Ceiling: Rose gold mirror, acrylic soft lighting
- Illumination: Cabin wall Rose gold hairline stainless, mirror etched
- Handrail: Stainless steel single tube
- Floor: Vitrified brick(FJ-F01)



FJ-B-K05

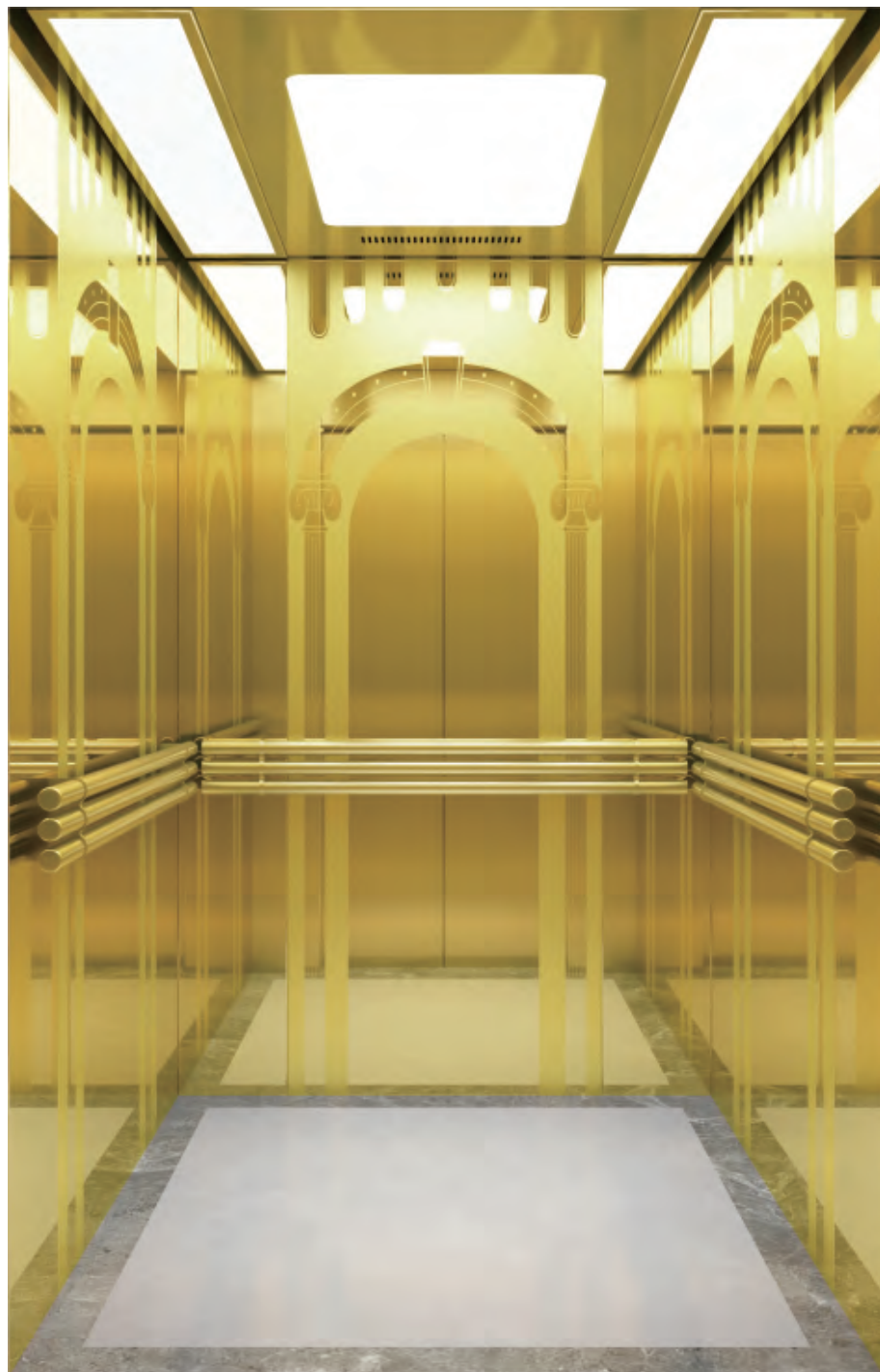
- Ceiling: Black titanium mirror, acrylic soft lighting
- Cabin wall: Black titanium mirror, hairline stainless, etched
- Handrail: Stainless steel flat handrail
- Floor: Vitrified brick(FJ-F01)



FJ-B-K07



- Ceiling: Mirror hairline stainless, acrylic soft lighting
- Cabin wall: Bronze hairline stainless, etched
- Handrail: Bronze stainless steel single tube
- Floor: Vitrified brick(FJ-F01)



FJ-B-K08



Ceiling: Titanium mirror stainless steel, acrylic soft lighting.
Cabin wall: Titanium mirror, etched
Handrail: Stainless steel triple handrail
Floor: Vitrified brick(FJ-F01)



FJ-B-K09



Ceiling: Wood decorative roof, hidden light strip, down lamp
Cabin wall: Wood wall, hairline stainless, etched, titanium decorative strip
Handrail: Wood U-shaped handrail
Floor: PVC



FJ-B-K10

Ceiling: Wood decorative roof, chandelier
Cabin wall: Wood wall, titanium mirror, etched
Handrail: Round wood handrail
Floor: PVC



FJ-B-K11

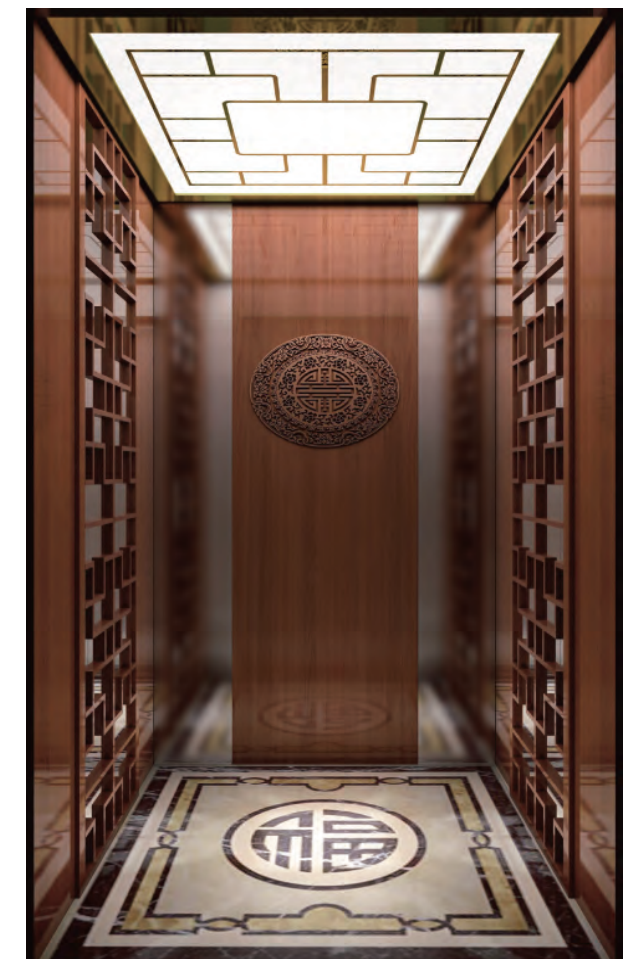


Ceiling: Mirror stainless steel, hidden light strip, down lamp
Cabin wall: Marble wall, mirror, etched
Handrail: Wood handrail
Floor: PVC

FJ-B-K12



Ceiling: Mirror stainless steel, acrylic soft lighting.
Cabin wall: Wood wall, mirror
Handrail: /
Floor: PVC





Villa elevator

Perfect & comfortable life

Designed to match the distinguished experience of a stylish home in a luxury private home, it is designed primarily for home users. Its sophisticated layout, variety of styles, and outstanding performance make it an indispensable luxury furniture for your villa home.





FJ-B-J01

Ceiling: mirror stainless steel, acrylic lighting. LED light
 Back wall: hairline stainless steel, mirror stainless steel
 Side wall: hairline stainless steel, mirror stainless steel
 Front wall: hairline stainless steel
 Floor: PVC



FJ-B-J03

Ceiling: Plastic coated steel plate, LED light
 Back wall: Leather hard wrapped with stainless steel strips, imitation marble skirting
 Side wall: Leather hard cover inlaid with stainless steel strip. imitation marble skirting line
 Front wall: Mirror stainless steel
 Handrail: Stainless steel handrail
 Floor: PVC



FJ-B-J02

Ceiling: mirror stainless steel, acrylic lighting, LED light
 Back wall: hairline stainless steel, champagne gold mirror etched stainless steel
 Side wall: hairline stainless steel, champagne gold mirror stainless steel
 Front wall: hairline stainless steel
 Floor: PVC



FJ-B-J04

Ceiling: Wood decorative roof, LED light strip
 Back wall: Mirror stainless steel, frosted glass, LED light strip, decorative painting
 Side wall: Hairline stainless steel, mirror stainless steel
 Front wall: Mirror stainless steel
 Floor: PVC





FJ-B-J05

- Ceiling: White plastic sprayed steel plate, hidden light belt, LED light
- Back wall: Champagne gold mirror etched stainless steel
- Side wall: Champagne gold mirror etched stainless steel, Champagne gold mirror etched steel
- Front wall: Champagne hairline stainless steel
- Floor: PVC



FJ-B-J07

- Ceiling: Champagne gold mirror, stainless steel, hidden light belt. LED light
- Back wall: Leather hard bag, champagne hairline stainless steel, decorative painting, LED light band
- Side wall: Leather hard bag, champagne hairline stainless steel
- Front wall: Champagne hairline stainless steel
- Floor: PVC



FJ-B-J06

- Ceiling: White plastic sprayed steel plate, hidden light belt, LED light
- Back wall: Rose gold mirror etched stainless steel
- Side wall: Rose gold mirror etched stainless steel, rose gold mirror stainless steel
- Front wall: Rose hairline stainless steel
- Floor: PVC



FJ-B-J08

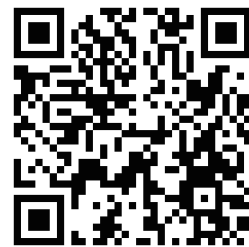
- Ceiling: Champagne gold hairline stainless steel, LED light strip
- Back wall: Champagne gold hairline stainless steel, champagne gold mirror stainless steel, LED light strip
- Side wall: Champagne gold hairline stainless steel, champagne gold mirror stainless steel
- Front wall: Champagne gold hairline stainless steel
- Floor: PVC





FJ-B-J09

- Ceiling: Mirror stainless steel, LED light strip
- Back wall: Wood grain cosmetic steel plate, mirror etched stainless steel
- Side wall: Wood grain cosmetic steel plate, mirror stainless steel
- Front wall: Mirror stainless steel
- Floor: PVC



FJ-B-J11

- Ceiling: Black Titanium mirror stainless steel, LED light strip
- Back wall: Black Titanium mirror stainless steel, safety laminated glass, LED light strip
- Side wall: Black Titanium mirror stainless steel, safety laminated glass
- Front wall: Black Titanium mirror stainless steel
- Floor: PVC



FJ-B-J10

- Ceiling: Star dome, LED light strip
- Back wall: Sprayed with stainless steel, sightseeing glass
- Side wall: Sprayed with stainless steel, sightseeing glass
- Front wall: Sprayed with stainless steel, sightseeing glass
- Floor: PVC



FJ-B-J12

- Ceiling: Rose gold hairline stainless steel, imitation marble finish, LED light strip
- Back wall: Rose gold hairline stainless steel frame, imitation marble finish
- Side wall: Rose gold hairline stainless steel frame, safety laminated glass
- Front wall: Rose gold hairline stainless steel
- Floor: PVC





FJ-B-J13



- Ceiling: Champagne gold mirror stainless steel, champagne gold hairline stainless steel, LED light strip
- Back wall: Champagne gold stainless steel frame, safety laminated glass
- Side wall: Champagne gold stainless steel frame, safety laminated glass
- Front wall: Champagne gold stainless steel
- Floor: PVC



FJ-B-J14



- Ceiling: Rose gold mirror stainless steel, LED light
- Rear wall: Safety laminated glass
- Side wall: Rose gold hairline stainless steel, safety laminated glass
- Front wall: Rose gold hairline stainless steel
- Floor: PVC



FJ-B-G01



Car cover: Hairline stainless steel
Observation wall: 6+6 safety laminated glass
Ceiling: Hairline stainless steel,
acrylic lighting
Cabin wall: Hairline stainless steel
Handrail: Round Single tube
Floor: PVC



FJ-B-G02



Car cover: Milky white acrylic, 3D
steel plate model, down
lamp
Observation wall: 6+6 safety laminated glass
three pieces
Ceiling: Baked enamel steel top
panel, center round acrylic
lighting decoration, acrylic
crystal lamp decoration
Cabin wall: Hairline stainless steel
Handrail: Round Single tube
Floor: PVC

Hospital elevator

A beautiful human-oriented world

FUJI hospital elevator series, taking full account of the uniqueness of the hospital environment, using the world's cutting-edge modular computer control technology, formed a highly integrated VVVF serial communication control system, So that the elevator brake smooth, smooth operation, patient times Feel comfortable. The design of multiple safety features effectively reduces the probability of accidents and allows safe and inaccessible patients access.





FJ-B-B01

Ceiling: Hairline stainless steel, LED energy-saving lamps
Ventilation: Axial fan
Cabin wall: Hairline stainless steel
Handrail: Double flat stainless steel
Floor: PVC



FJ-B-B02

Ceiling: Painted steel plate, LED energy-saving lamp
Ventilation: Axial fan
Cabin wall: Hairline stainless steel
Handrail: Stainless steel tube
Floor: PVC



Freight elevator

FUJI cargo elevators are easy to carry and adapt under all kinds of operating conditions, making more weightlifting and more than adequate. Create a new concept of cargo delivery.

Machine roomless freight elevator

FUJI machine-room-less elevator products are designed with low-carbon and environmental protection, saving energy and reducing consumption, fully embodying the product's green humanistic spirit. Compared with geared elevators of the equivalent load class, electric energy is saved by about 40%, saving 10% of the building area.

FJ-B-H01

Ceiling: Paint steel
Car wall/Car door: Paint steel
Illumination: Energy-saving light
Door opening mode: Side opening
Floor: Checkered plate



FJ-B-H02

Ceiling: Hairline stainless steel
Car wall/Car door: Hairline stainless steel
Illumination: Energy-saving light
Door opening mode: Center-opening & doublefolded type
Floor: Checkered plate





Escalator

FUJI escalators are manufactured using international advanced technology and advanced design concepts to provide passengers with a new feeling of brightness and comfort, allowing you to appreciate the extraordinary charm and luxury of modern architecture.



Moving walk

The compact design of the rail pre-assembly technology and mechanical system of the FUJI moving walkway and the handrail drive system has reduced the size of the sidewalk and enabled the building's space to be used effectively.



Standard function

Best curve automatic generate	Based on the principle of distance, automatic transportation calculates the most suitable speed curve for human-machine function. There is no limit on the number, and it is not limited by the short floor.
Door control selection	According to the difference between the types of door machines used, the system can flexibly set the mode of opening the door in place and whether the door is in place.
Start the torque automatic compensate	Before the elevator is running, it will automatically start compensation based on the current load of the car to achieve smooth startup effects and improve the comfort of the elevator.
Operate independently	The elevator does not accept the outside call and close the door manually. During the group control, the group control system is separated from the group control system independently.
Straight drive	Automatic running status, when the car is full, the elevator does not respond to the out-of-hall summary of the elevator. However, the call outside the hall can still be registered, and the service (single elevator), or by other elevator services (duplex / group control).
Setting function of the door opening time	The system automatically judges different states such as summoning the door, the opening of the door, the door protection opening, and the delayed door.
Close the door button	The automatic operation state can be closed in advance when the door closing button is closed to improve the efficiency.
Error instruction deletion	For the call in the car, passengers can use the method of pressing the instruction button for two consecutive instructions to cancel the error registration instruction.
Lower collective call control operation	In the automatic state or driver status, the elevator is in response to the instruction signal in the response sedan, and only the outward-to-down button signal of the response hall.
Light curtain signal self-diagnosis	During the closure of the door, when there was a foreign body from the door, the light curtain protection movement, the elevator turned to open the door. But light curtain protection does not work during fire operation.
Change station and stop	If the elevator continues to open the door protection time, the opening signal is still invalid, and the elevator will become a closed state. After the door is closed, the next stop will be recorded, prompting the E55 failure.
Overload protection	When the internal load of the elevator exceeds the rated load (overload conditions: exceeding 110% of the rated load, enter the overload state), the elevator alarm, do not close the door, stop running.
Mandatory close	When the forced closing function is opened, when the light curtain or safe touchpad moves the elevator that cannot be closed when the setting time cannot be closed, the elevator will enter the forced closing state, slowly close the door, and emit prompt sounds.
Inspect running	The elevator enters the maintenance status, the system cancel the automatic operation and the operation of the automatic door. Press the (bottom) button can make the elevator run at the speed point.
Failure information record	The system can automatically record the detailed information when the failure occurs to improve the efficiency of maintenance.
Repeat closing the door	After the elevator continues to close the door for a certain time, if the door lock is not closed, the elevator will automatically open the door, and then repeat the door.
Intelligent correction of the floor location	Each time the elevator runs to the position of the terminal, the system automatically checks and corrects the location information of the car according to the first level forced deceleration switch to check and corrects the location information of the car.
Fire emergency return	After receiving the fire signal, the elevator no longer responded to the call instruction, returned to the fire base station, and stopped the elevator.
Energy-saving	Systems can support the automatic closing of the lighting fan in the car to achieve energy saving after the predetermined time (F9-01) is in place.
Key	In the automatic operation state, when the service switch moves or sets the exit service time, the elevator responds to all the internal call, and return to the elevator base station to stop the automatic running of the elevator and turn off the internal lighting and fan of the car.
Voice announcement	During the elevator operation, information is automatically broadcast to passengers and the upcoming stations. (Home elevator options)
Shaft self-learning	Before the system is running automatically, the parameters of the shafts need to be learned by themselves. The elevator runs from the bottom floor to the highest level at the bottom, and automatically records all position signals in the shafts during the operation.
Collective call selection running	Automatic running or driver status. During the running process, when the elevator responds to the inside, the automatic response to the outside of the call of the call button signal. The passengers of any service layer can summon the elevator by register the upper and lower button signals.
Leisure Return to Base station	In the automatic running state, when there is no internal instructions and the call of the stations that exceeds the setting time, the elevator automatically returns the set to the base station to wait for passengers.

Low-speed self-rescue	When the elevator is in a non-inspection state and does not stop in the flat area. At this time, as long as it meets the safety requirements of the operation, the elevator will automatically run to the flat area slowly, and then open the door.
Service floor setting	The system can flexibly select or activate a certain or more elevator service floor as needed.
Move to the leveling floor slightly	The elevator stops at the floor station. Due to the changes in the load, it will cause leveling floors to fluctuate, and the ground is uneven, which brings inconvenience to the entry and exit of the people and the goods. At this time, the system allows running to the leveling floor at a slow speed.
Anti-trouble	The system automatically judges the number of passengers in the sedan and the registration instructions in the sedan. If there are too many instructions in the sedan, the system believes that it is a state of trouble. The in-sedan instructions need to be re-registered.
Car arrival chime	After the elevator arrives at the destination floor according to the passenger's requirements, a prompt signal is issued from the car.
Open the door in advance	When the elevator is automatically operated, the speed is less than 0.25m/s during the parking process, and when the signal of the door area is valid, the door lock signal is short through the door sealing contactor, and then the door is opened in advance, so that the elevator efficiency can be maximized.
Restart the operation	When the power supply is restored due to interruption, the elevator location signal fails to retain or cannot determine the location of the car, the elevator will be located to the end station. After positioning, the position display displays the floor of the elevator and restores normal operation.
UCMP	When the system automatically detects the car in the unlocking area and the door is open, the elevator immediately brakes and stops the movement.
Button adhesion inspection	The system can identify the adhesion of the out-of-hall summon button, and automatically remove the summoning of the adhesion to avoid the elevator from being closed due to the adhesion of the external summon button.
Driver operation	Enter the driver's operation, and the corresponding operation of the elevator is controlled by the driver.
Test running	Test operations include the fatigue test operation of the new elevator, the test of the internal call, the tested floor test, the prohibition of the response, the prohibition of the opening and the door, the limit switch of the shielding terminal station, and the shielding overload signal.
Firemen running	Entering the firemen's operation mode, there is no automatic opening and closing movement. Only through the opening button, click the operation (optional) to open the door. At this time, the elevator only responds to the in-sedan instructions, and only one instruction can be registered at a time.
Priority rescue	The integrated control system automatically classifies the faulty category to meet the conditions of safe operation, and give priority to the leveling floor to open the door to let people go.
Disposter and wait	During duplex / group control, each elevator stopped at different floors to wait for the passengers.
Directly to the station	Based on the principle of distance, the automatic operation of the running curve is automatically operated. Without crawling, the flat layer is directly stopped.

Optional function

Automatic rescue device (ARD)	For elevators equipped with emergency power supply, the system enables emergency power to save self-rescue at low speed during power outages.
Duplex / group control operation	Support two elevators parallel / group control operation, you can choose a variety of scheduling algorithms to meet the different needs of customers.
Disabled service	When the elevator is waiting for the elevator, if there is an instruction registration of the disabled person's manipulation of the disabled, the elevator opens the door to maintain time. Similarly, if there is a person with the disabled person's manipulation of the door, the door is opened, and the door holding time will also increase.
IC card	Passengers must have a card to get to the authorized floor.
Remote monitoring interface board	It is used to query the running status of the elevator, the current floor, the fault information, etc., and then pass it to the monitoring room by communication. The PC in the monitoring room can monitor the elevator monitoring and control.
Car assistant operation box	While there is a main operation box, you can also select the auxiliary operation box. The auxiliary operation box and the main operation box operate the same functions.
Extended opening hours	Press the special button in the car to keep the door open for a period of time.

Human-machine interface

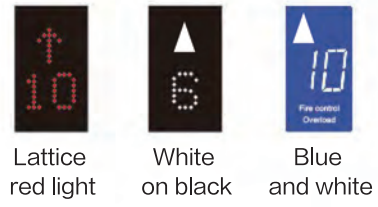


FJ-B-CZ01
Standard



FJ-B-CZ02
Standard

Display optional



None bottom outer calling

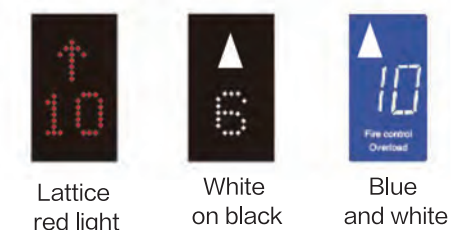


Black glass panel
(Customizable)

FJ-B-WH02
Optional

FJ-B-WH01
Optional
Super-thin

Display optional



Have bottom outer calling



FJ-B-WH06
Standard

FJ-B-WH07
Standard



FJ-B-WH03
Standard



FJ-B-WH04
Standard



FJ-B-WH05
Standard
Super-thin

Man-Machine interface



Display screen



Blue screen Optional True color Optional Multi-Media Optional

Multimedia display size : 7 inch,10 inch



Due to the limitations of the printing process, the color of the actual processing may be slightly different from the catalog, and the final selection may be based on the actual material and the color sample.

Hoist-way horizontal display



FJ-B-HX01
Optional



FJ-B-HX02
Optional

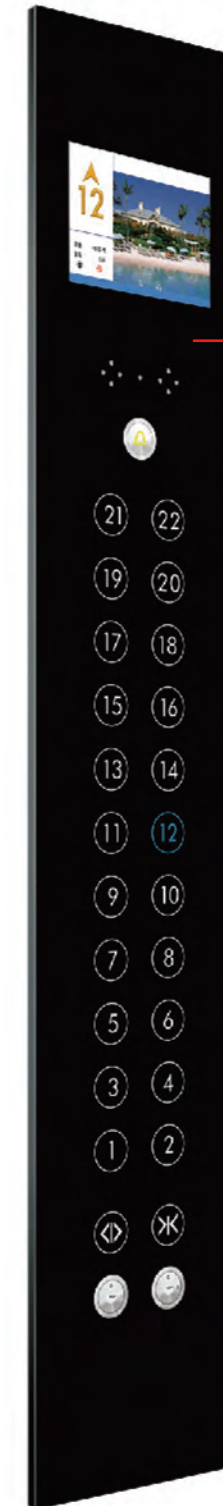
Arrival gong



FJ-B-DZD01
Optional



FJ-B-DZD02
Optional



FJ-B-CZ05
Optional

Black glass panel
(Customizable)

Have bottom
outer calling



FJ-B-WH10
Optional

Ceiling series

QSS-Basic

FJ-B-DD01

Baked enamel steel frame, circle carve transparent light and vaulted white transparent light board for soft illumination design



FJ-B-DD02

Baked enamel steel frame, circle carve transparent light and vaulted white transparent light board for soft illumination design



FJ-B-DD03

Middle with image roof, side of stainless steel floor with down lamp for soft illumination design



FJ-B-DD07

Multi-layer glisten board and stainless steel mirror carve board with transparent light for soft illumination design



FJ-B-DD08

Stainless steel mirror hollow pale with white organic panel, aluminum alloy frame



FJ-B-DD04

Mirror stainless steel, acrylic lighting decoration, LED lamps on both sides



FJ-B-DD05

Mirror stainless steel, acrylic lighting decoration

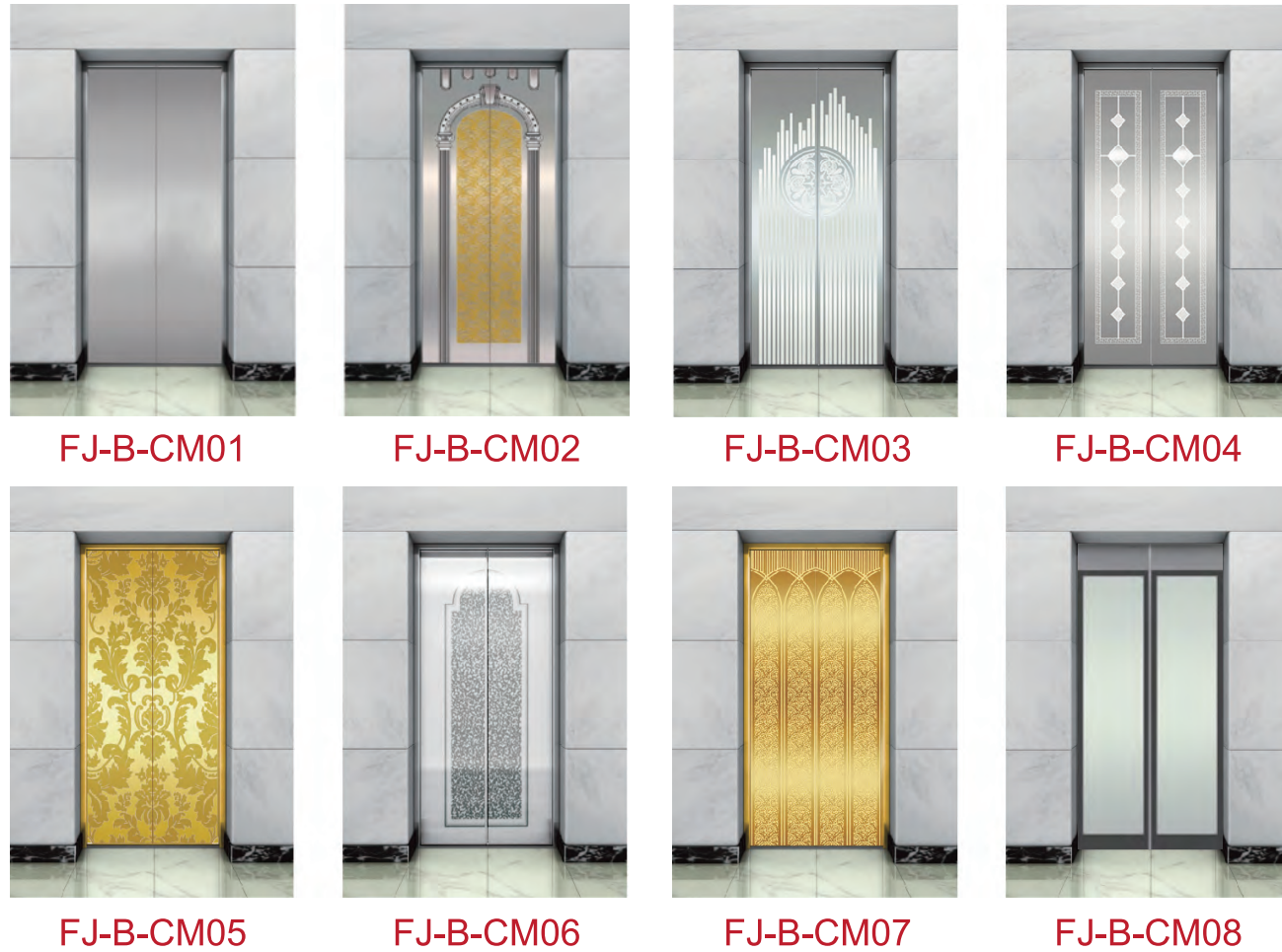


FJ-B-DD06

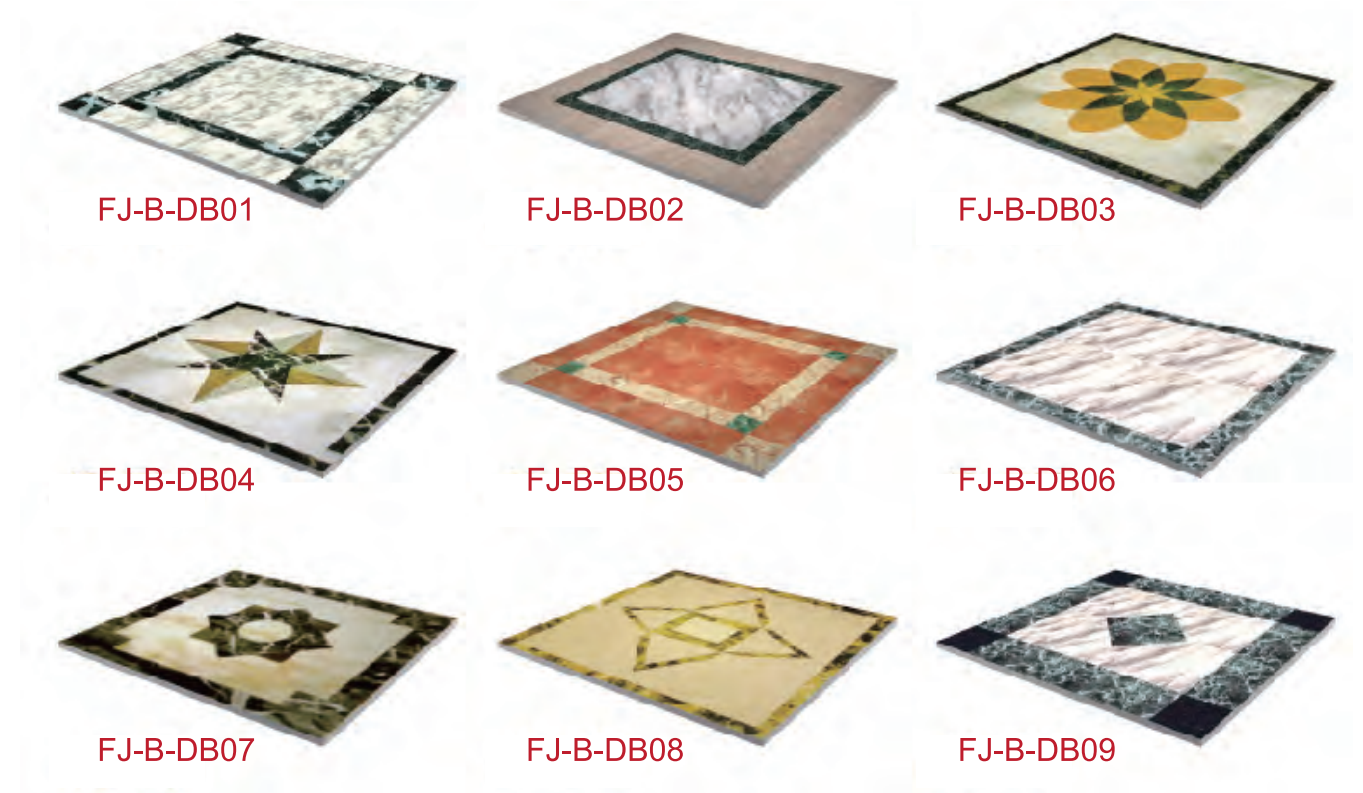
Stainless steel frame with white organic panel



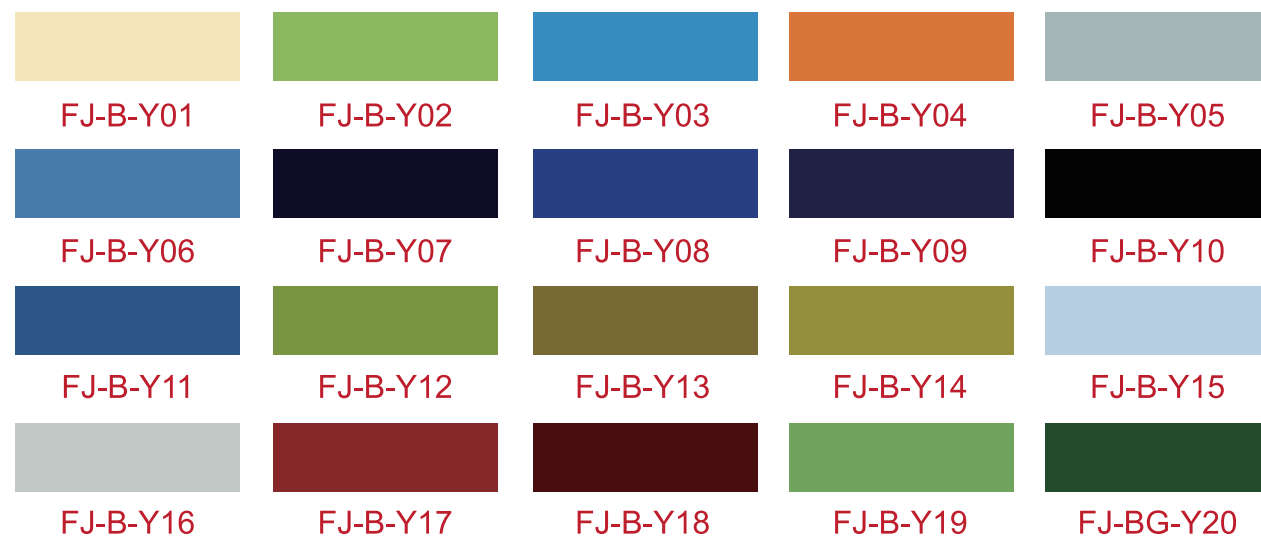
Landing door series



Floor series



Optional color series

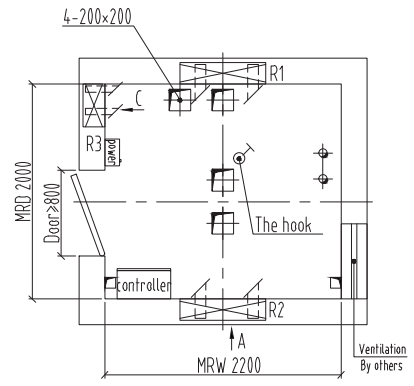


Handrail series

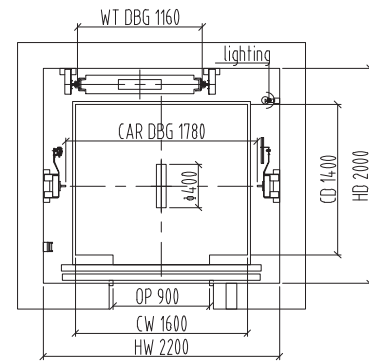


Note : Due to the limitations of the printing process, the color of the actual processing may be slightly different from the catalog, and the final selection may be based on the actual material and the color sample.

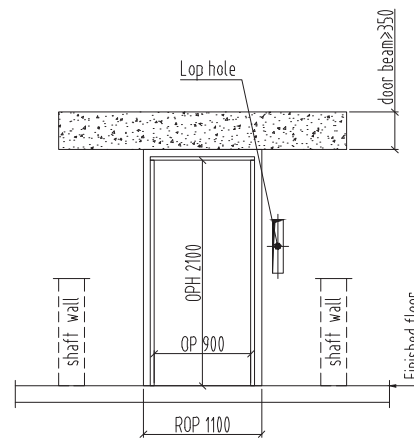
Small machine room passenger elevator construction sketch



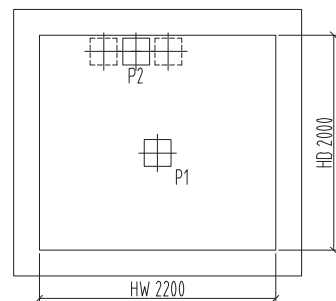
Machine room plan/1:60



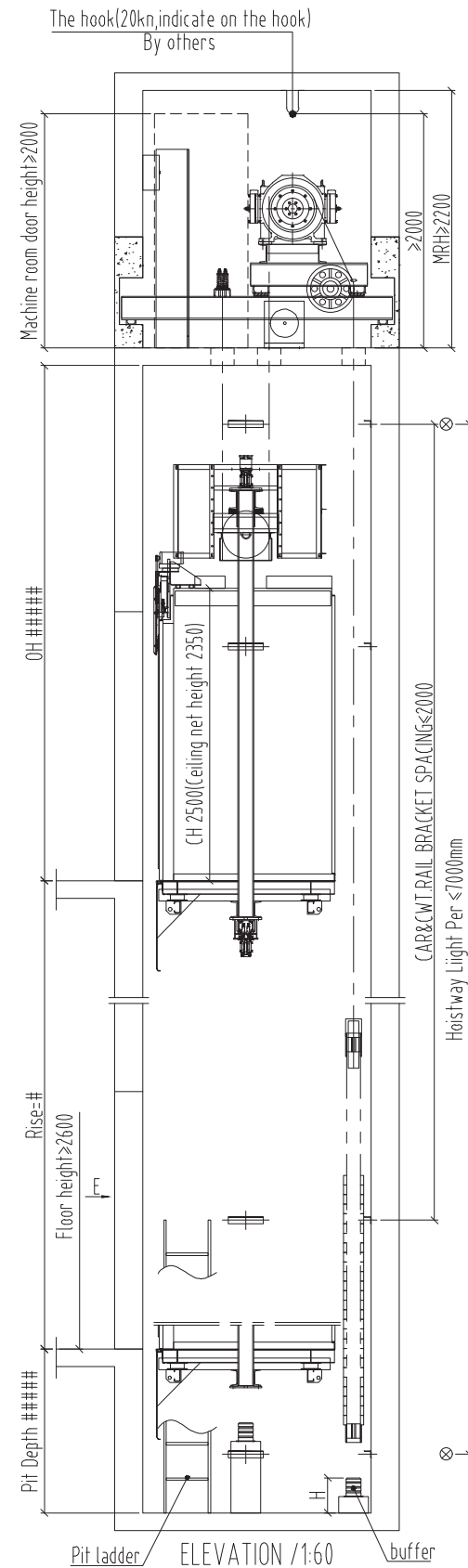
Hoistway plan/1:60



E/reserved hole/1:60



Pit plan/1:60

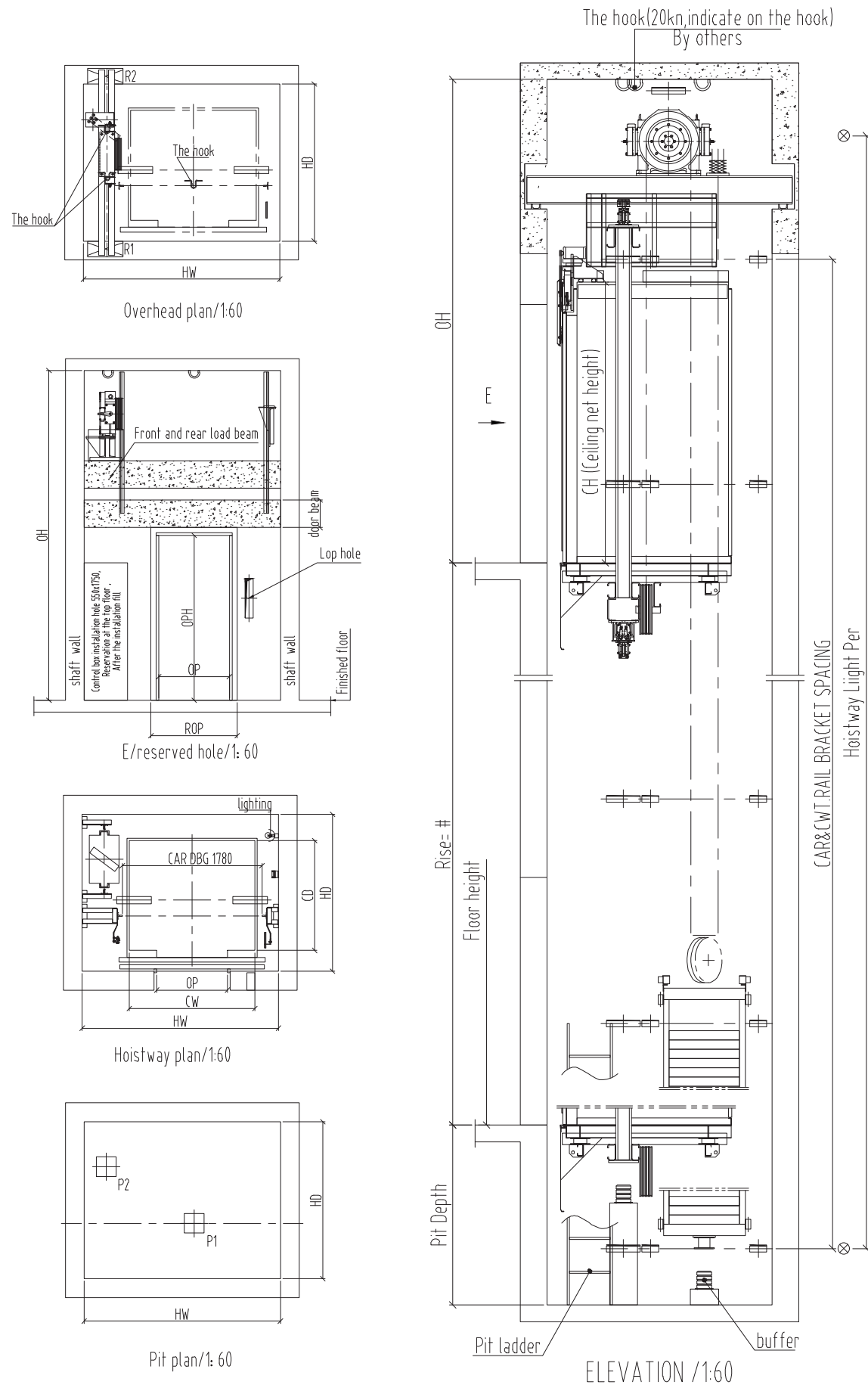


ELEVATION /1:60

Model	Load KG	Passenger NO.	speed m/s	Car specification CWxCD	Door opening size JJxOPH	Well size HWxHD	Machine room size MRWxMRD	Pit depth Pit	Top floor height OH	Power	Acting force				
											R1	R2	R3	P1	P2
FJBCK450/1.0	450	6	1	1100x1100	700x2100	1700x1700	1700x1700	1400	4500	3.2	28800	17200	1900	44000	35000
FJBCK450/1.5			1500					4600	4.9						
FJBCK630/1.0	630	8	1	1400x1100	800x2100	2000x1700	2000x1700	1400	4400	4.3	35200	21800	4300	58000	45600
FJBCK630/1.5			1500					4500	6.4						
FJBCK630/1.75			1600					4600	7.5						
FJBCK800/1.0			1400					4400	5.4						
FJBCK800/1.5	800	10	1.5	1400x1350	800x2100	2000x2000	2000x2000	1500	4500	8.1	44800	27400	5400	72000	56000
FJBCK800/1.75			1600					4600	9.4						
FJBCK1000/1.0	1000	13	1	1600x1400	900x2100	2200x2000	2200x2000	1400	4400	6.7	53400	32200	6000	88000	68000
FJBCK1000/1.5			1500					4500	10						
FJBCK1000/1.75			1600					4600	11.7						
FJBCK1150/1.0	1150	15	1	1900x1400	1000x2100	2500x2100	2500x2100	1400	4400	7.8	55600	36300	7800	98000	75000
FJBCK1150/1.5			1500					4500	11.7						
FJBCK1150/1.75			1600					4600	13.6						
FJBCK1250/1.0	1250	16	1	1900x1500	1100x2100	2500x2200	2500x2200	1400	4400	8.5	60400	39400	8500	106000	81000
FJBCK1250/1.5			1500					4500	12.7						
FJBCK1250/1.75			1600					4600	14.9						
FJBCK1350/1.0	1350	18	1	1900x1600	1100x2100	2500x2300	2500x2300	1400	4400	9.2	67200	43400	8700	114000	87000
FJBCK1350/1.5			1500					4500	13.8						
FJBCK1350/1.75			1600					4600	16.1						
FJBCK1600/1.0	1600	21	1	2000x1750	1200x2100	2600x2450	2600x2450	1400	4400	11	73600	47600	9600	128000	96000
FJBCK1600/1.5			1500					4500	16.6						
FJBCK1600/1.75			1600					4600	19.4						

(The data is for design reference only. Regarding detailed parameters, please take technical drawing as criterion.)
 Note: If specification exceeds above range, please contact FUJII Elevator Company.

Machine room-less passenger elevator construction sketch

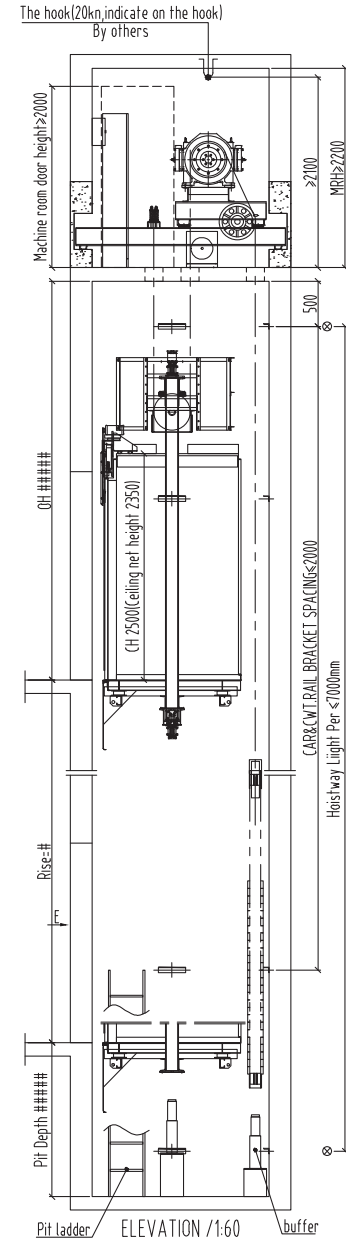
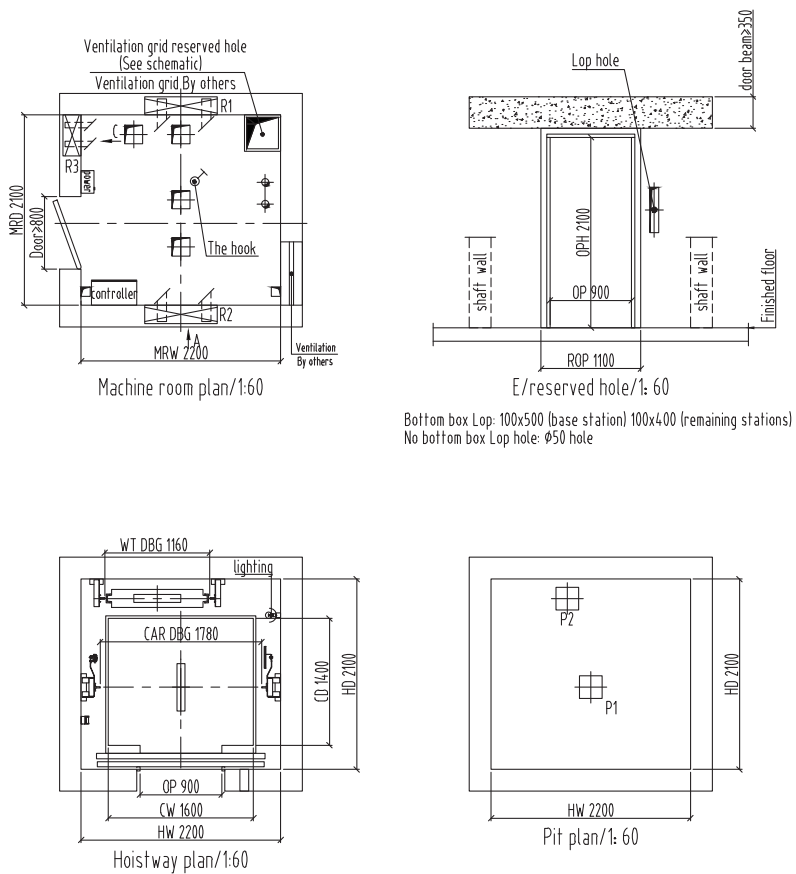


Model	Load KG	Passenger NO.	speed m/s	Car specification CWxCD	Door opening size JjxOPH	Well size HWxHD	Pit depth Pit	Top floor height OH	Power	Acting force			
										R1	R2	P1	P2
FJBCKW450/1.0	450	6	1	1100x1100	700x2100	2000x1700	1600	4300	3.2	16500	21000	44000	35000
FJBCKW450/1.5			1.5				1700	4400	4.9				
FJBCKW630/1.0	630	8	1	1100x1400	800x2100	2000x2000	1600	4300	4.3	19800	26400	58000	45600
FJBCKW630/1.5			1.5				1700	4400	6.4				
FJBCKW630/1.75			1.75				1700	4500	7.5				
FJBCKW800/1.0	800	10	1	1400x1350	800x2100	2300x2000	1600	4300	5.4	25700	27100	72800	56000
FJBCKW800/1.5			1.5				1700	4400	8.1				
FJBCKW800/1.75			1.75				1700	4500	9.4				
FJBCKW1000/1.0	1000	13	1	1600x1400	900x2100	2500x2000	1600	4300	6.7	27400	39600	88000	68000
FJBCKW1000/1.5			1.5				1700	4400	10				
FJBCKW1000/1.75			1.75				1700	4500	11.7				
FJBCKW1150/1.0	1150	15	1	1900x1400	1000x2100	2800x2000	1600	4300	7.8	30400	43600	92000	75000
FJBCKW1150/1.5			1.5				1700	4400	11.7				
FJBCKW1150/1.75			1.75				1700	4500	13.6				
FJBCKW1250/1.0	1250	16	1	1900x1500	1100x2100	2900x2100	1600	4300	8.5	32200	46800	106000	81000
FJBCKW1250/1.5			1.5				1700	4400	12.7				
FJBCKW1250/1.75			1.75				1700	4500	14.9				
FJBCKW1350/1.0	1350	18	1	1900x1600	1100x2100	2900x2200	1600	4300	9.2	37600	46400	114000	87000
FJBCKW1350/1.5			1.5				1700	4400	13.8				
FJBCKW1350/1.75			1.75				1700	4500	16.1				
FJBCKW1600/1.0	1600	21	1	2000x1750	1200x2100	3000x2200	1600	4600	11	39600	56500	128000	96000
FJBCKW1600/1.5			1.5				1700	4700	16.6				
FJBCKW1600/1.75			1.75				1700	4800	19.4				

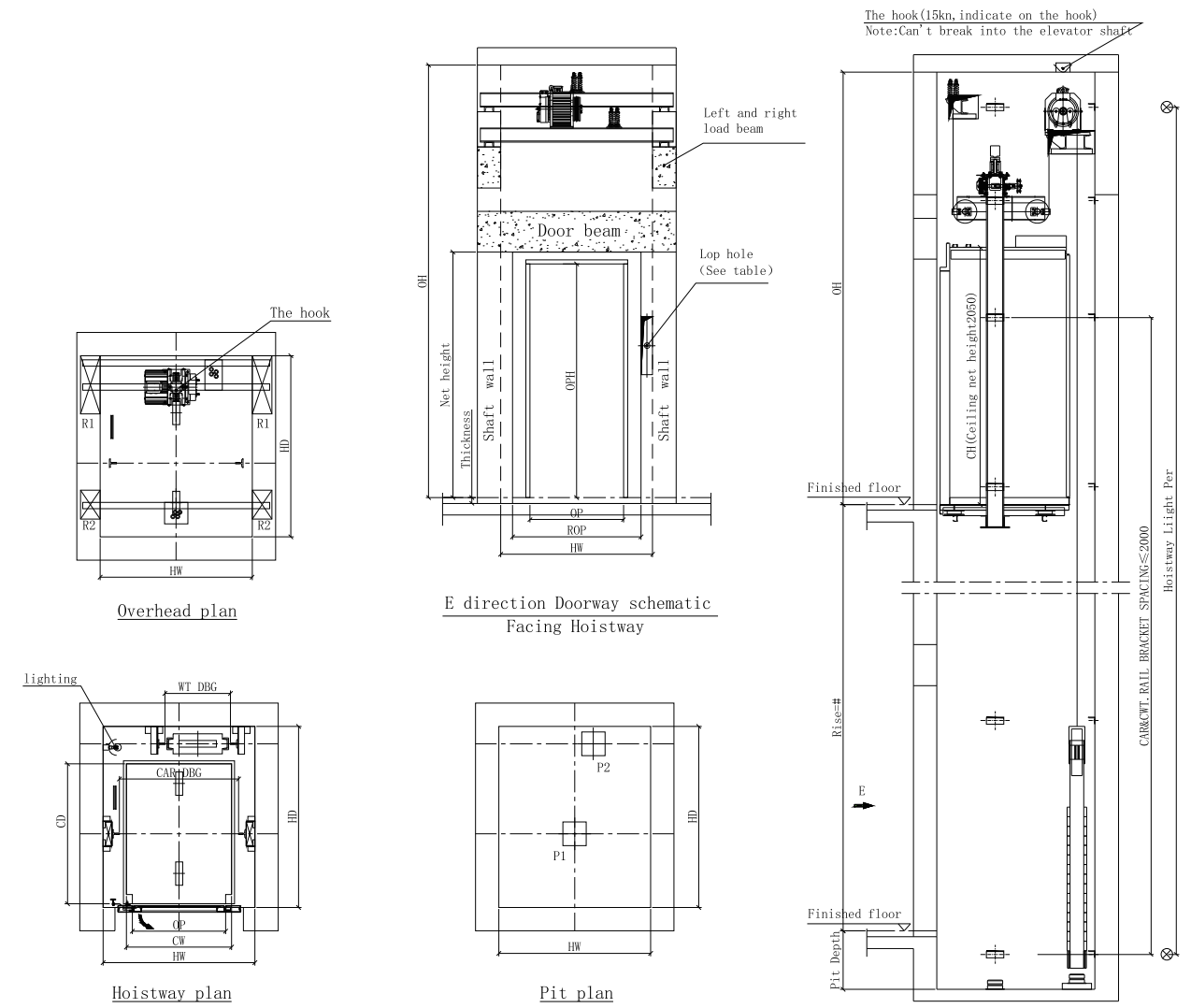
(The data is for design reference only. Regarding detailed parameters, please take technical drawing as criterion.)
 Note: If specification exceeds above range, please contact FUJII Elevator Company.



High speed elevator construction sketch



Villa elevator construction sketch



Model	Load KG	Pas-senger NO.	speed m/s	Car specification CWxCD	Door opening size JJxOPH	Well size HWxHD	Machine room size MRWxMRD	Pit depth Pit	Top floor height OH	Power	Acting force				
											R1	R2	R3	P1	P2
FJBCK630/2.0	630	8	2	1400x1100	800x2100	2000x1800	2000x1800	1700	5000	8.2	44800	27400	5400	72000	56000
FJBCK800/2.0	800	10	2	1400x1350	800x2100	2000x2050	2000x2050	1700	5000	10.9	44800	27400	5400	72000	56000
FJBCK800/2.5			2.5					1900	5200	13.5					
FJBCK800/3.0			3					3200	5700	16.5					
FJBCK1000/2.0	1000	13	2	1600x1400	900x2100	2200x2100	2200x2100	1700	5000	13.3	53400	32200	6000	88000	68000
FJBCK1000/2.5			2.5					1900	5200	16.8					
FJBCK1000/3.0			3					3300	5600	20.3					
FJBCK1000/4.0			4					4200	6200	27.1					

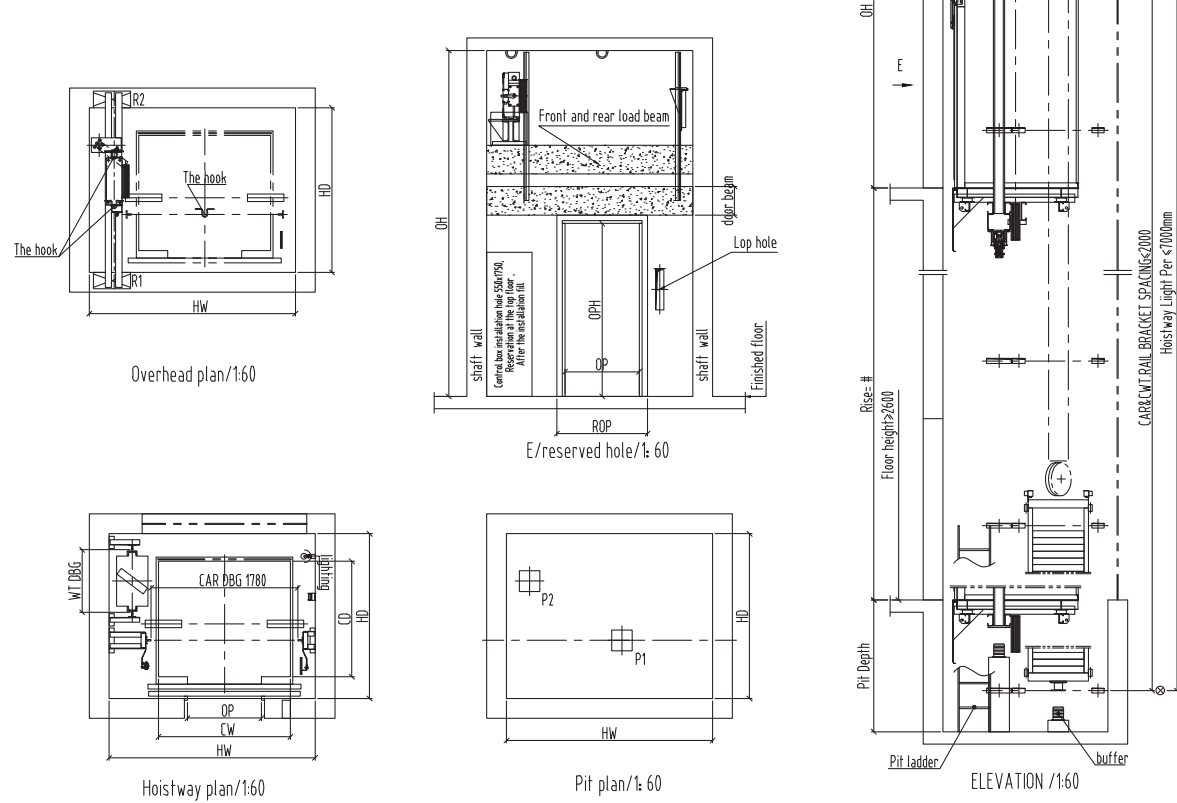
(The data is for design reference only. Regarding detailed parameters, please take technical drawing as criterion.)
Note: If specification exceeds above range, please contact FUJI Elevator Company.

Model	Load KG	Passenger NO.	speed m/s	Car specification CWxCD	Door opening size JJxOPH	Well size HWxHD	Pit depth Pit	Top floor height OH	Power	Door opening mode
FBJY320/0.4	320	4	0.4	900x1150	800x2000	1800x1500	500	3100	0.9	中分 Center opening
FBJY400/0.4	400	5		900x1200		1800x1600			1.1	
FBJY320/0.4	320	4		900x1150		1600x1500			0.9	旁开 Side opening
FBJY400/0.4	400	5		900x1200		1600x1600			1.1	

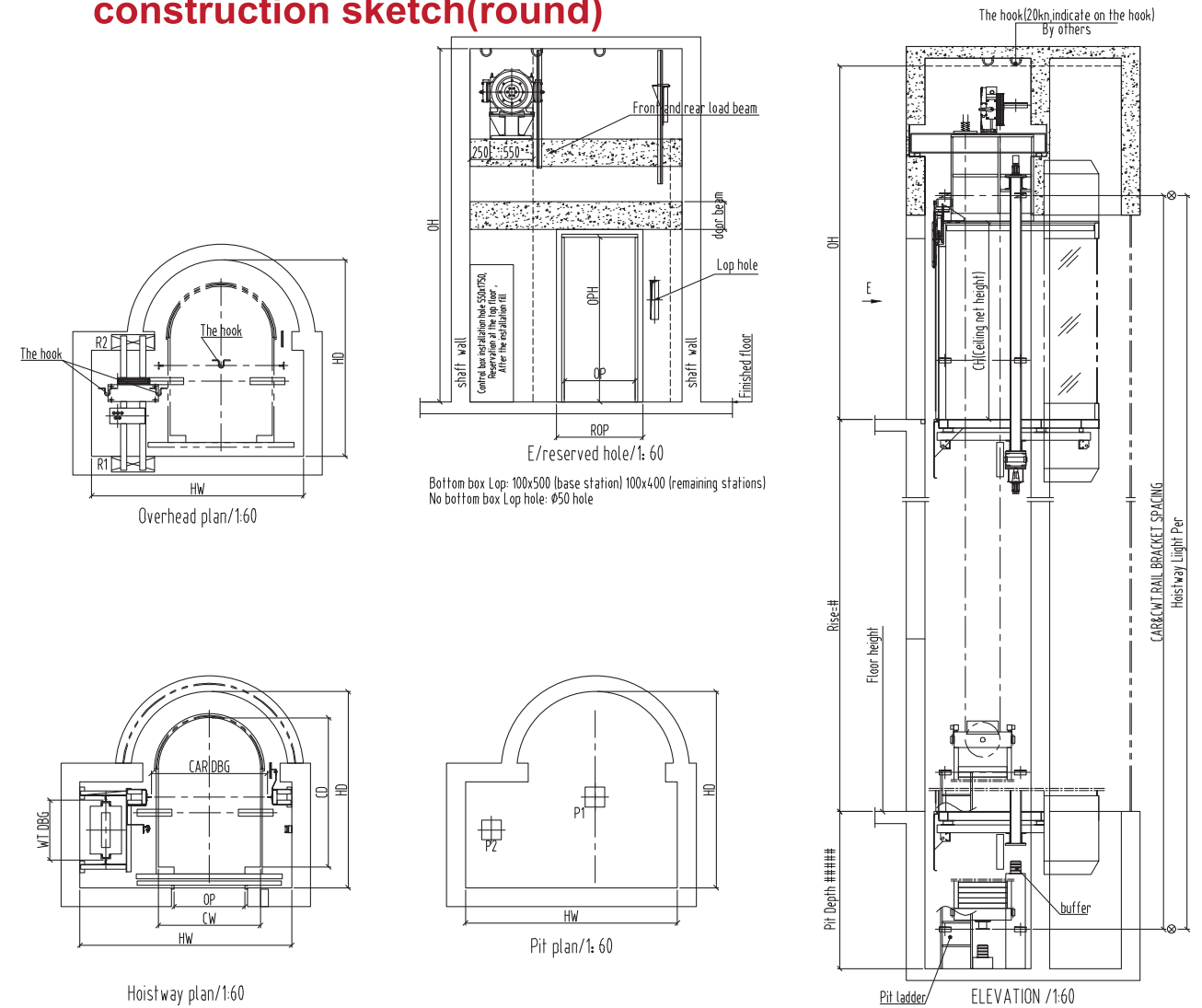
(The data is for design reference only. Regarding detailed parameters, please take technical drawing as criterion.)
Note: If specification exceeds above range, please contact FUJI Elevator Company.



Machine room-less observation elevator construction sketch(square)



Machine room-less observation elevator construction sketch(round)



Model	Load KG	Passenger NO.	speed m/s	Car specification CWxCD	Door opening size JJxOPH	Well size HWxHDmin-HDmax	Pit depth Pit	Top floor height OH	Power	Acting force			
										R1	R2	P1	P2
FJBGW450/1.0	450	6	1	1100x1100	700x2100	2000x1700	1600	4600	3.2	16500	21000	44000	35000
FJBGW450/1.5			1700				4700	4.9					
FJBGW630/1.0	630	8	1	1200x1300	800x2100	2100x1800	1600	4600	4.3	19800	26400	58000	45600
FJBGW630/1.5			1700				4700	6.4					
FJBGW630/1.75			1700				4700	7.5					
FJBGW800/1.0			1600				4600	5.4					
FJBGW800/1.5	800	10	1.5	1400x1350	800x2100	2300x2000	1700	4700	8.1	25700	27100	72800	56000
FJBGW800/1.75			1700				4700	9.4					
FJBGW1000/1.0			1600				4600	6.7					
FJBGW1000/1.5	1000	13	1.5	1600x1400	900x2100	2500x2000	1700	4700	10	27400	39600	88000	68000
FJBGW1000/1.75			1700				4700	11.7					
FJBGW1150/1.0	1150	15	1	1900x1400	1000x2100	2800x2000	1600	4600	7.8	30400	43600	92000	75000
FJBGW1150/1.5			1700				4700	11.7					
FJBGW1150/1.75			1700				4700	13.6					
FJBGW1250/1.0	1250	16	1	1900x1500	1100x2100	2900x2000	1600	4600	8.5	32200	46800	106000	81000
TGW1250/1.5			1700				4700	12.7					
FJBGW1250/1.75			1700				4700	14.9					
FJBGW1350/1.0	1350	18	1	1900x1600	1100x2100	2900x2400	1600	4600	9.2	37600	46400	114000	87000
FJBGW1350/1.5			1700				4700	13.8					
FJBGW1350/1.75			1700				4700	16.1					
FJBGW1600/1.0	1600	21	1	2000x1750	1200x2100	3000x2400	1600	4600	11	39600	56500	128000	96000
FJBGW1600/1.5			1700				4700	16.6					
FJBGW1600/1.75			1700				4800	19.4					

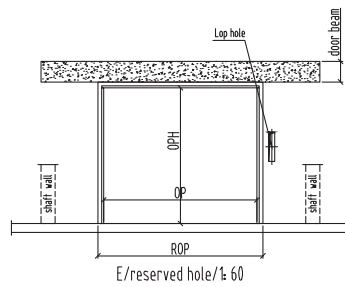
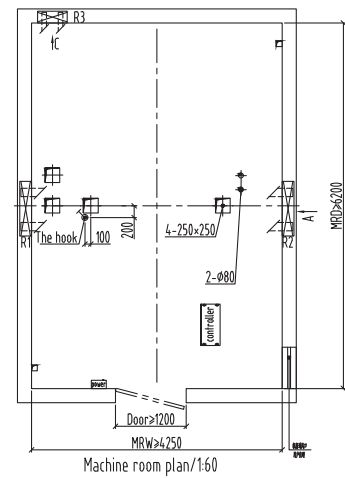
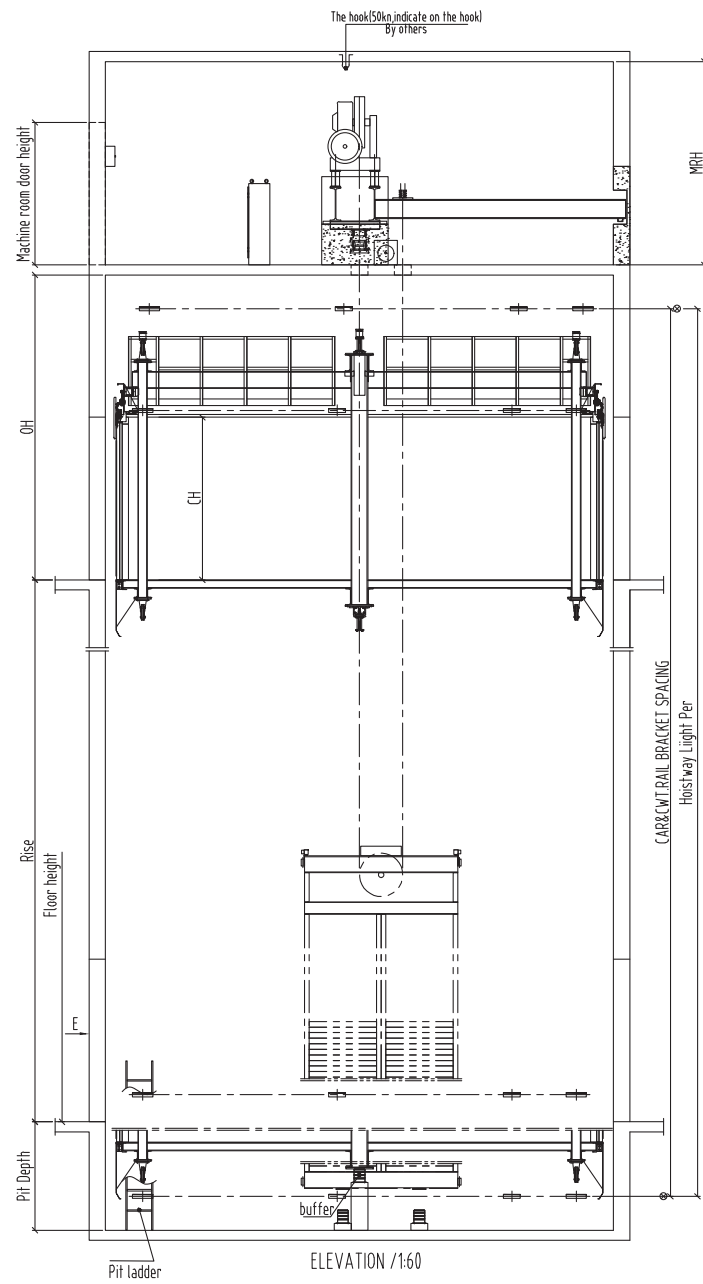
Model	Load KG	Passenger NO.	speed m/s	Car specification CWxCD	Door opening size JJxOPH	Well size HWxHDmin-HDmax	Pit depth Pit	Top floor height OH	Power	Acting force			
										R1	R2	P1	P2
FJBGW450/1.0	450	6	1	1000x1400	700x2100	2400x1050-2000	1800	4600	3.2	17600	22400	52000	41000
FJBGW450/1.5			1900				4700	4.9					
FJBGW630/1.0	630	8	1	1100x1600	800x2100	2500x1200-2200	1800	4600	4.3	21200	28800	65000	52000
FJBGW630/1.5			1900				4700	6.4					
FJBGW630/1.75			1900				4700	7.5					
FJBGW800/1.0			1800				4600	5.4					
FJBGW800/1.5	800	10	1.5	1200x1800	800x2100	2600x1300-2400	1900	4700	8.1	25200	35200	80000	64000
FJBGW800/1.75			1900				4700	9.4					
FJBGW1000/1.0	1000	13	1	1300x1900	900x2100	2700x1350-2500	1800	4600	6.7	29200	42800	96000	76000
FJBGW1000/1.5			1900				4700	10					
FJBGW1000/1.75			1900				4700	11.7					
FJBGW1600/1.0	1600	21	1	1700x2200	1100x2100	3100x1500-2800	1800	4600	11	36600	63400	136000	104000
FJBGW1600/1.5			1900				4700	16.6					
FJBGW1600/1.75			1900				4800	19.4					

(The data is for design reference only. Regarding detailed parameters, please take technical drawing as criterion.)
 Note: If specification exceeds above range, please contact FUJI Elevator Company.

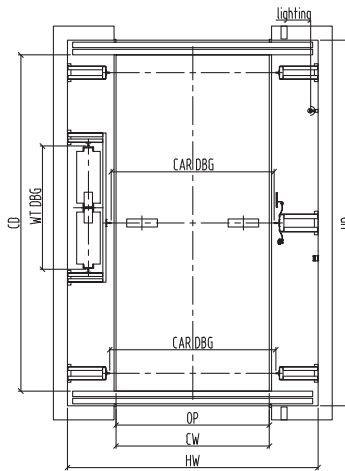
(The data is for design reference only. Regarding detailed parameters, please take technical drawing as criterion.)
 Note: If specification exceeds above range, please contact FUJI Elevator Company.



Sketch of car elevator construction



The other side door hole is symmetrically reserved according to E to the door hole
 Bottom box Lop: 100x500 (base station) 100x400 (remaining stations)
 No bottom box Lop hole: Ø50 hole

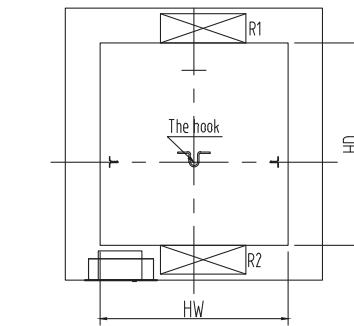


Hoistway plan/1:60

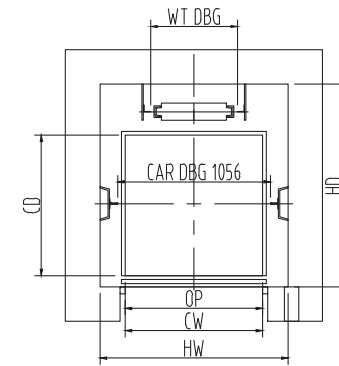
Model	Load KG	Speed m/s	Car specification CWxCD (mm)	Door opening size JxOPH (mm)	Well size HWxHD (mm)	Machine room size MRWxMRD (mm)	Pit depth Pit (mm)	Top floor height OH (mm)	Power	Acting force (N)				
										R1	R2	R3	P1	P2
FJBQC3000/0.25	3000	0.25	2600x5700	2600x2100	4250x6200	4250x6200	1500	4800	15	188400	97600	30000	150000	120000
FJBQC3000/0.5	3000	0.5	2600x5700	2600x2100	4250x6200	4250x6200	1500	4800	18.5	188400	97600	30000	150000	120000
FJBQC5000/0.25	5000	0.25	3400x7000	2800x2300	4800x7500	4800x7500	1500	5000	22	263200	146400	43800	220000	170000
FJBQC5000/0.5	5000	0.5	3400x7000	2800x2300	4800x7500	4800x7500	1500	5000	28.5	263200	146400	43800	220000	170000

(The data is for design reference only. Regarding detailed parameters, please take technical drawing as criterion.)
 Note: If specification exceeds above range, please contact FUJII Elevator Company.

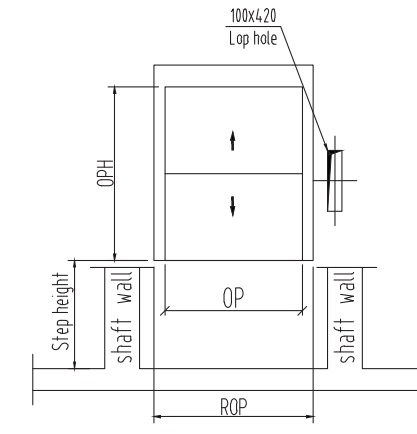
Dumbwaiter lift construction sketch



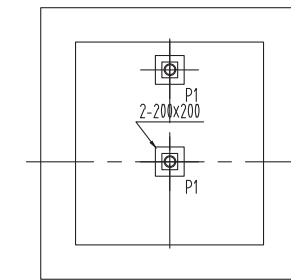
Overhead plan/1:60



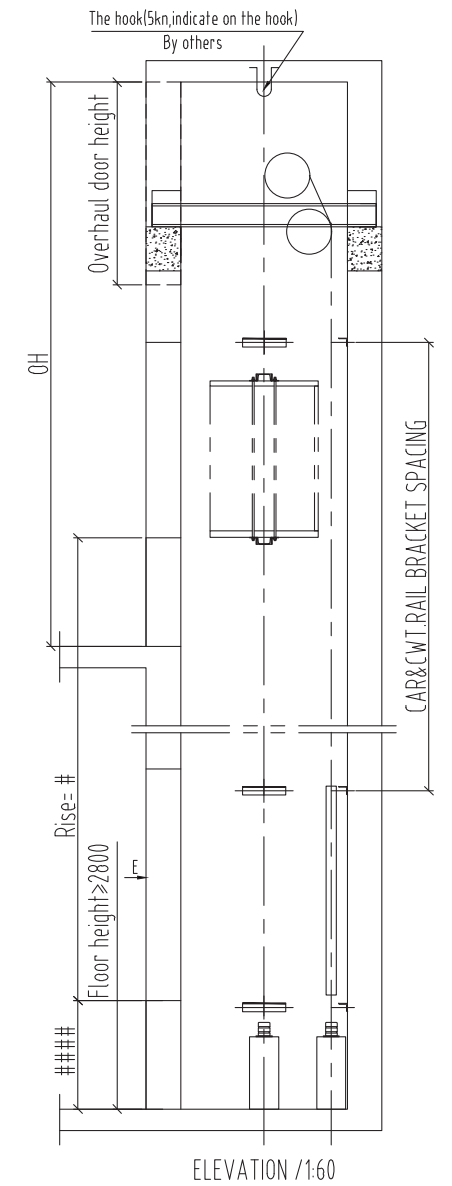
Hoistway plan/1:60



E/reserved hole/1:60



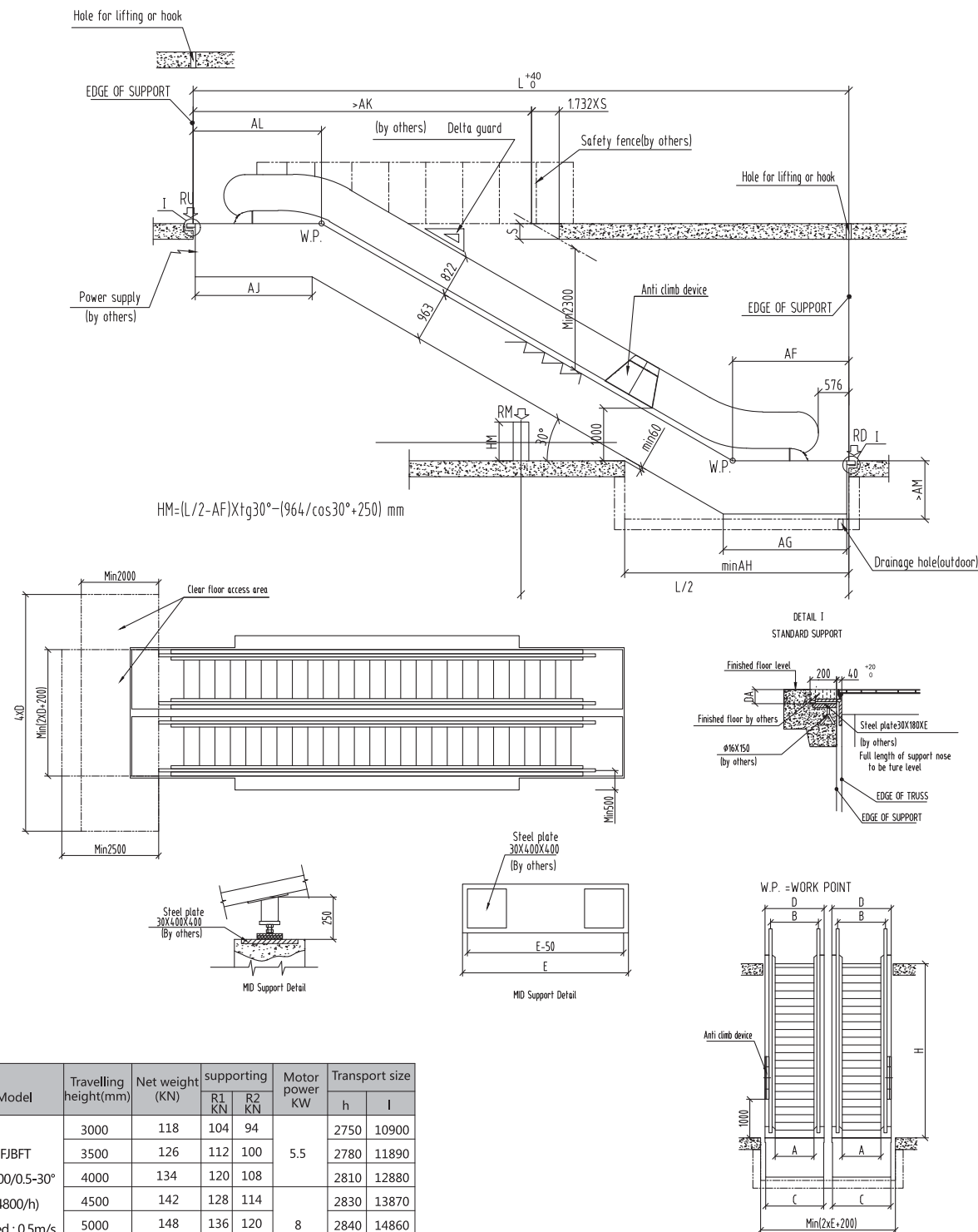
Pit plan/1:60



Loading capacity (kg)	100	200	200	250
Speed (m/s)	0.4	0.4	0.4	0.4
Car net size (mm)	Width	650	950	950
	Depth	775	975	975
Door-opening type	Up/down center opening type			
Door-opening size (mm)	Width	650	950	950
	Height	1000	1000	1000
Hoistway net size (mm)	Width	1200	1500	1500
	Depth	1000	1150	1150
Top floor height (mm)	3600	3600	3600	3600
Pit depth (mm)	750	750	750	750
Max travelling height (m)	20	20	20	20
Work type	Window type	Window type	Fall to the ground type	Fall to the ground type

(The data is for design reference only. Regarding detailed parameters, please take technical drawing as criterion.)
 Note: If specification exceeds above range, please contact FUJII Elevator Company.

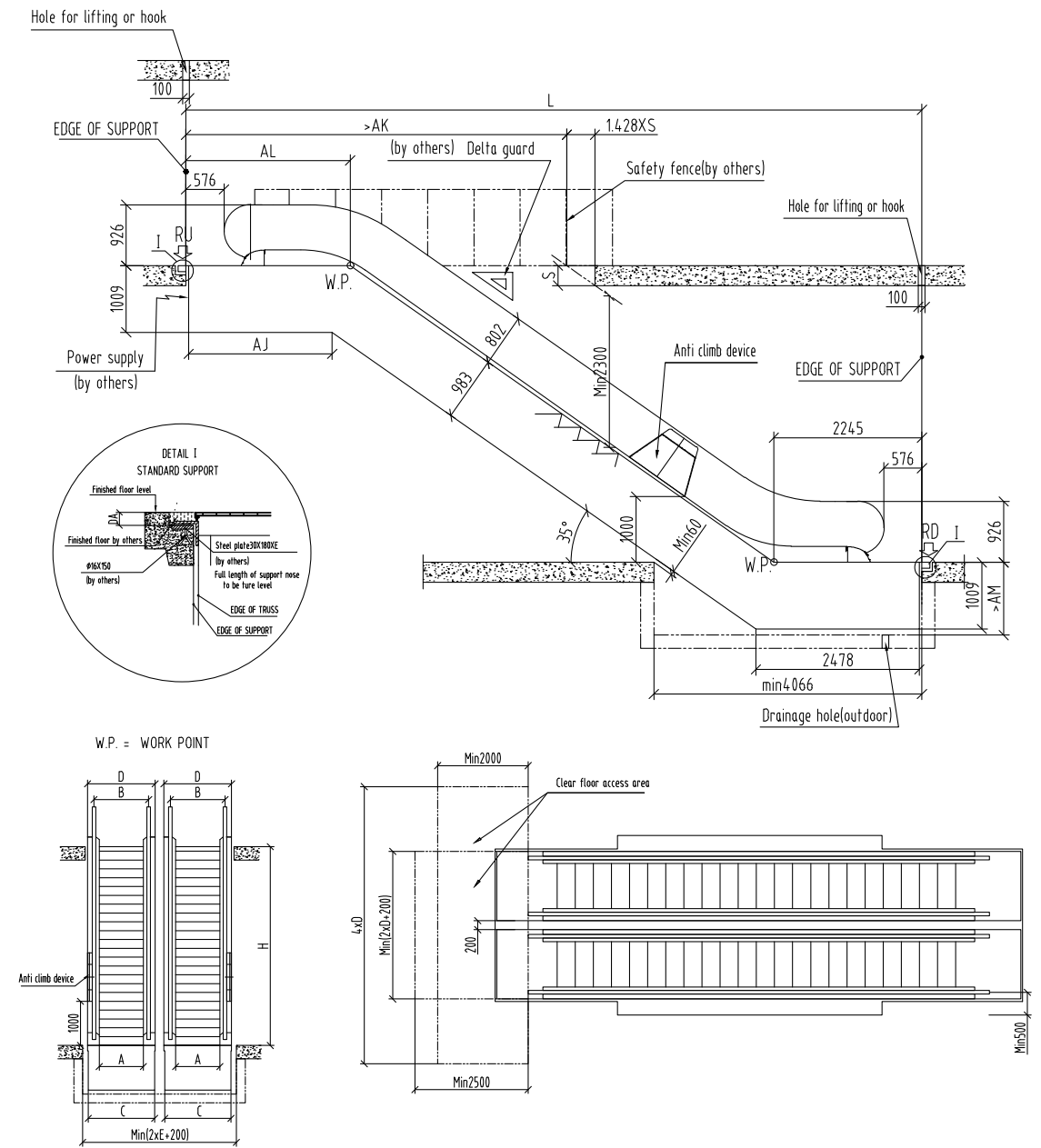
30°escalator construction sketch



Model	Travelling height(mm)	Net weight (KN)	supporting		Motor power KW	Transport size	
			R1 KN	R2 KN		h	l
FJBFT VF800/0.5-30° (4800/h) speed : 0.5m/s	3000	118	104	94	5.5	2750	10900
	3500	126	112	100		2780	11890
	4000	134	120	108		2810	12880
	4500	142	128	114	8	2830	13870
	5000	148	136	120		2840	14860
	5500	164	148	132		2860	15860
FJBFT VF1000/0.5-30° (6000/h) speed : 0.5m/s	6000	172	156	138	11	2870	16850
	3000	126	118	106	5.5	2750	10900
	3500	134	128	114		2780	11890
	4000	142	136	122		2810	12880
	4500	150	146	130	8	2830	13870
	5000	166	158	142		2840	14860
5500	174	168	150	11		2860	15860
6000	184	176	158		2870	16850	

1000	1000	1228	1238	1600	3400
800	800	1028	1038	1400	3000
step width	A	B	C	D	E
Intermediate supporting	(L/2-2600)×tg30°-(897/cos30°+300)				

35°escalator construction sketch



1000	1000	1228	1238	1600	3400
800	800	1028	1038	1400	3000
step width	A	B	C	D	E

Model	Travelling height(mm)	Net weight (KN)	supporting		Motor power KW	Transport size	
			R1 KN	R2 KN		h	l
FJBFT VF800/0.5-35° (4800/h) speed : 0.5m/s	3000	112	98	88	5.5	2850	10180
	3500	120	104	94		2890	11030
	4000	126	112	100		2920	11890
	4500	132	118	106	8	2940	12750
	5000	140	124	112		2970	13610
	5500	146	130	118		2980	14470
FJBFT VF1000/0.5-35° (6000/h) speed : 0.5m/s	6000	152	138	122	11	3000	15330
	3000	120	112	100	5.5	2850	10180
	3500	128	120	106		2890	11030
	4000	134	128	114		2920	11890
	4500	142	134	120	8	2940	12750
	5000	148	142	128		2970	13610
5500	158	154	138	11		2980	14470
6000	166	162	144		3000	15330	



1.Six-year warranty on three major parts

① Six-year warranty scope:

Traction machine, Integrated control cabinet,Door operator.

② Warranty conditions:

The parts within the above range are guaranteed for six years under normal use environment and conditions. For damage caused by force majeure or improper use, management, and maintenance, the parts will be charged at the cost price.

FUJIS "stand on the ground,FUJIS elevator - quiet,smooth,soft" Fuji elevator Co.,Ltd

FUJIS Elevator Consuming parts list

FUJISJ 电梯易损备件清单

Items 序号	Consuming parts 易损件名称	Used for specific parts 所用设备	Manufacturer 制造商	Quantity 数量
1	Landing door slider 层门滑块	Landing door silt 层门地坎	FUJISJ	20
2	Car oil cup 轿厢油杯	Car top 轿厢顶	FUJISJ	4
3	Counter weight oil cup 对重油杯	Sub guide rail 副导轨	FUJISJ	4
4	Oil box 接油盒	Pit 底坑	FUJISJ	2
5	Limit switch (NC)限位开关(常闭)	Shaft 井道	FUJISJ	8
6	Door lock contact 门锁触点	Landing door 层门	FUJISJ	5
7	Female Lock contact 门锁触点	Landing door 层门	FUJISJ	5
8	Door open rope 开门绳	Landing door 层门	FUJISJ	2
9	Car guide shoe 轿厢导靴衬	Guide rail 导轨	FUJISJ	5
10	Counter weight guide shoe	Guide rail 导轨	FUJISJ	5
11	Lighting switch 照明开关	Switch 开关	FUJISJ	5
12	Triangle lock 三角锁	Guide rail 层门	FUJISJ	5
13	Multi-functional key 多功能钥匙	Guide rail 层门	FUJISJ	5
14	Fuse 熔断器保险丝	Controller 控制柜	FUJISJ	5
15	Anti-collision rubber pad 防撞	Landing door 层门	FUJISJ	5
合计 total	85pcs / 85件			

注: 最终解释权归本公司所有
Note: The final interpretation right belongs to the company.

2.Five years free replacement for consuming parts

Global brand FUJI Elevator, surpassing the industry rules, provides free elevator consuming parts for five years.



CE certificate for elevator, Compliant with EU standards



CE certificate for escalator, Compliant with EU standards



SGS certificate for both factory and product



Certificate Of Authorization



Certificate about the energy efficiency



Certificate of conformity for measurement system



Fuji brand-- Sino-Japanese joint venture business license



Certificate for Quality management system



Certificate for Environment management system



Certificate for Occupational health and safety management system

All-round after-sale service



It shows repair and maintenance value produces the considerate service

FUJI Elevator, with its first-class technology, rich management experience and excellent service, enjoys scientific maintenance and strict quality control of its products. We have won wide praise from customers at home and abroad for its stable quality and super high cost performance. Our service outlets have advanced logistics systems all over the country, which can fully guarantee customers' demand for delivery at any time and provide high-quality clothing. Business, early-sub-service, more care.



Professional teams



Prompt & convenient services



Service hot-line



Professional repair & maintenance



7*24-hour safeguard

FUJI elevator adopts a housekeeper service standard to ensure that customers can conduct after-sales consultation within 24 hours at any time, and professional customer service personnel will help customers solve problems for the first time.



Modular installation

Factory modular production, saving installation labor and time costs.
Minimal installation difficulty, minimal assembly errors.



Export directly to the site

Shipping and customs clearance agents in hundreds of countries, tell us where your elevator needs to be installed, provide one-stop service.